



# MONTHLY MEMBERSHIP PROGRESS REPORT

District 1 CN

Results as of: 3/31/2015

GMT: THOMAS MATNEY

LOCATION ILLINOIS

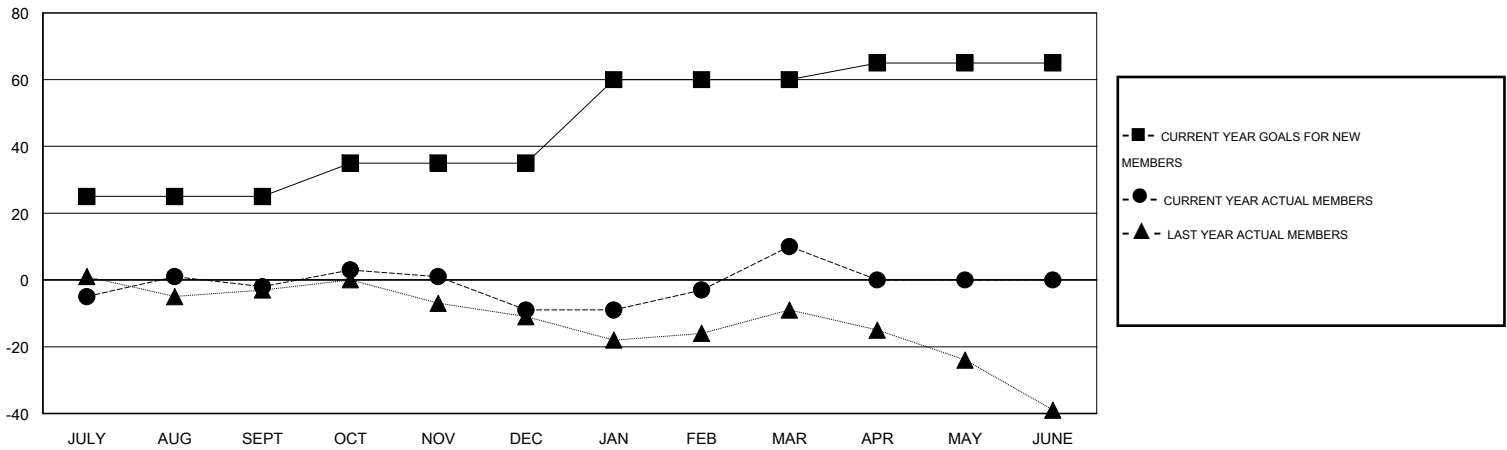
GMT CA 1

Clubs					Members				
RESULTS FOR 2014-2015					RESULTS FOR 2014-2015				
QUARTER	NEW CLUB GOAL	NEW CLUBS	DROPPED CLUBS	NET GAIN/LOSS	QUARTER	NEW MEMBER GOAL	CHARTER AND NEW MEMBERS ADDED	DROPPED MEMBERS	NET GAIN/LOSS
JULY/AUG/SEPT	1	0	0	0	JULY/AUG/SEPT	25	15	17	-2
OCT/NOV/DEC	0	0	0	0	OCT/NOV/DEC	10	12	19	-7
JAN/FEB/MAR	1	0	0	0	JAN/FEB/MAR	25	35	16	19
APR/MAY/JUNE	0	0	0	0	APR/MAY/JUNE	5	0	0	0

GOALS AND ACTUAL NEW CLUBS CUMULATIVE



GOALS AND ACTUAL MEMBERS CUMULATIVE



DROPPED CLUBS: 0	21 CLUBS OF 33 ADDED 1 OR MORE NEW MEMBERS	<u>GENDER DISTRIBUTION</u>	
		MALE	780 (79.59%)
		FEMALE	200 (20.41%)
<u>DROPPED MEMBERS</u>		<u>FAMILY UNIT MEMBERS</u> 139	
DECEASED	11	<u>HEAD OF HOUSEHOLD</u> 68	
CLUB CANCELLED	0	<u>NON-HEAD OF HOUSEHOLD</u> 71	
OTHER	41		
TOTAL	52		

[CLICK HERE FOR HEALTH ASSESSMENT DATA](#)